

SUPERSITESTORAGE™

10' HIGH CUBE

- Preston Hire ISO9001 accredited
- Designed and constructed to meet CSC standards
- ISO foot print configuration
- Forklift pockets / top and bottom corner blocks
- Water, wind and vermin proof with labyrinth ventilation
- Double container doors with EPDM moulded seals
- Door tie back anchors
- Lockable container handles
- Added security slim-line lockbox
- Internal tie down lashing points
- Hardwood timber flooring
- Dimensions:
L2991mm x W2438mm x H2896mm



Our range of 10ft high cube shipping containers offer cost effective and robust storage solutions to meet your demanding requirements. Being wind, water and vermin proof, our lockable containers provide ideal storage and protection of tools, machinery, sports equipment, personal belongings and almost anything else. Create extra storage without the need for expensive renovations or relocation. Easily portable, our range of hire containers provide endless storage options.



COUNT ON US

1800 440 550 | prestonhire.com.au

SPECIFICATIONS SUPERSITESTORAGE™ 10' HIGH CUBE

SPECIFICATIONS

EXTERNAL DIMENSIONS

Length	2991mm
Width	2438mm
Height	2896mm

INTERNAL DIMENSIONS

Length	2831mm
Width	2350mm
Height	2695mm

DOOR OPENING DIMENSIONS

Width	2342mm
Height	2585mm

INTERNAL CAPACITY (NOMINAL)

Floor space	6.6m ²
Cubic capacity	17.9m ³

FORKLIFT POCKETS

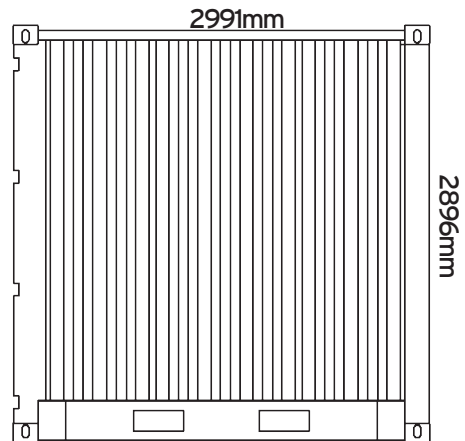
Width	320mm
Height min.	115mm
Centre to centre	920mm

WEIGHT RATINGS

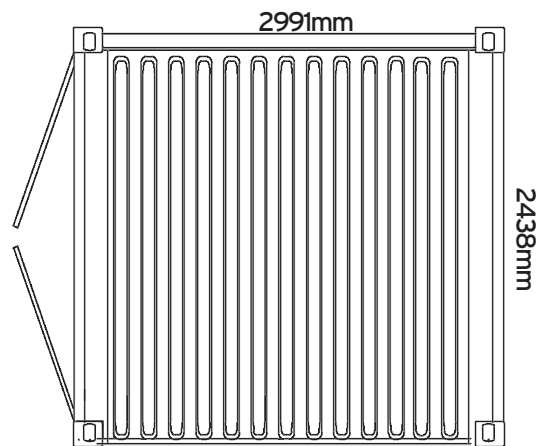
Max. Gross Weight (R)	10160kg
Tare Weight (design) (T)	1380kg
Max Payload (P)	8780kg

OVERALL UNIT

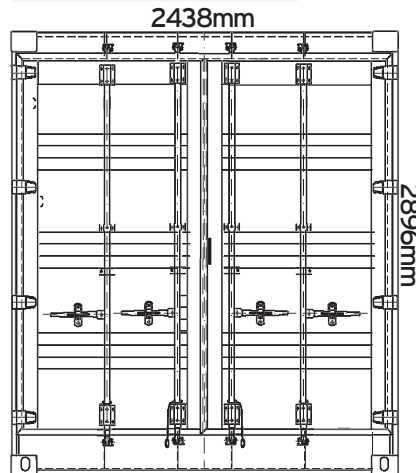
SIDE ELEVATION



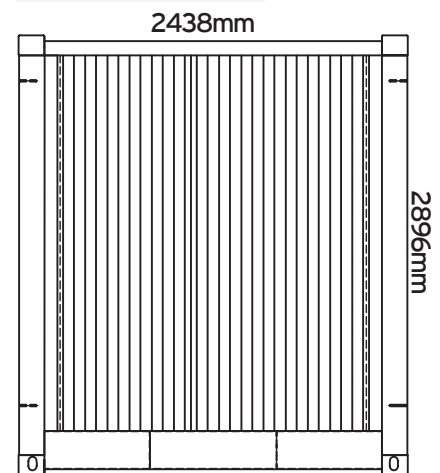
ROOF ELEVATION



REAR ELEVATION



FRONT ELEVATION



SPECIFICATIONS SUPERSITESTORAGE™ 10' HIGH CUBE

CONSTRUCTION SPECIFICATIONS

MATERIALS

Roof panels	Anti-corrosive steel
Door panels	CORTEN A, SPA-H, B480 or equivalent
Side panels	Y.P.: 35kg/sq.mm
Front panels	T.S.: 49/sq.mm
Rear corner posts inner	Roller high tensile steel SM490A or equivalent Y.P.: 33kg/sq.mm T.S.: 50kg/sq.mm
Door locking bars	Structural steel round pipe STK41 Y.P.: 24kg/sq.mm T.S.: 41kg/sq.mm
Corner fittings	Casted weldable steel SCW480 Y.P.: 28kg/sq.mm T.S.: 49kg/sq.mm
Locking gear cams and keepers	Forged weldable steel: S20C Y.P.: 28kg/sq.mm T.S.: 49kg/sq.mm
Door hinge pins / Door gasket retainer	Stainless steel: SUS304
Door gasket	EPDM
Floor	28mm thick hardwood ply min 19 ply
Ventilator	ABS resin labyrinth type
*Note	Y.P.- Yielding Point, T.S - Tensile Strength

SURFACE PREPARATION AND COATINGS

Abrasive shot blast	SA2 1/2
Primer, high build, topcoat	Exterior 110 micron, Interior 70 micron
Bitument base	200 micron



COUNT ON US

Disclaimer. All information provided in this publication is correct at time of printing. Please contact Preston Hire for any updated versions.

1800 440 550 | prestonhire.com.au



SPECIALISED EQUIPMENT HIRE SOLUTIONS

Service Facility Locations

Preston Hire - NSW

Unit 3,10 Tarlington Place,
Smithfield, NSW 2164
nswsales@prestonhire.com.au

Preston Hire - ACT

38 John Bull Street,
Queanbeyan West, NSW 2620
actsales@prestonhire.com.au

Preston Hire - New Zealand

563 Rosebank Rd,
Avondale, Auckland 1026
nzsales@prestonhire.com.au

Preston Hire - QLD

83 Parramatta Road,
Underwood, QLD 4119
qldsales@prestonhire.com.au

Preston Hire - VIC/TAS

38-40 Sunline Dr,
Truganina, VIC 3029
vicsales@prestonhire.com.au

Preston Hire - WA/NT

Unit 2,8 Hunt Street,
Malaga, WA 6090
wasales@prestonhire.com.au

Preston Hire - SA

102 Cormack Road,
Wingfield, SA 5013
sasales@prestonhire.com.au

**Preston Hire available across Oceania*



COUNT ON US

1800 440 550 | prestonhire.com.au